



Mobile Trading

User Guide: Getting Started

For Smartphones & Android

2014

System Requirements

	Operating System (OS)	Browser
Smartphone	<ul style="list-style-type: none"> ➤ Java MIDP2 Compatible ie, Symbian OS, Blackberry OS ➤ Windows Mobile above 5.0 and below 7.0 	Browser that support WAP2.0 or HTML
Android	Version 2.3 and above	-NIL-

Getting Started

1. Downloading Mobile Trading Application

Smart Phones	<ol style="list-style-type: none"> a. On your mobile device, go to the HLeBroking Mobile Trading URL: www.hlebroking.com/mwap b. Enter your HLeBroking User ID and Password*. c. Select Login. <p>*User ID and Password are identical to your HLeBroking access. Only HLeBroking registered clients are eligible to use HLeBroking. If you do not have a HLeBroking account, register for FREE at www.hlebroking.com now.</p>
Android	<ol style="list-style-type: none"> a. Go to "Play Store" b. Search for "HLeBroking" to get application *For Tab User, please select "HLeBroking for Tab 7" c. Then select to install.

Page Navigation

Main Menu

As shown is the main menu after log –in.

There are also pop – up menu at the bottom bar. Pull to left/right to view more menus.

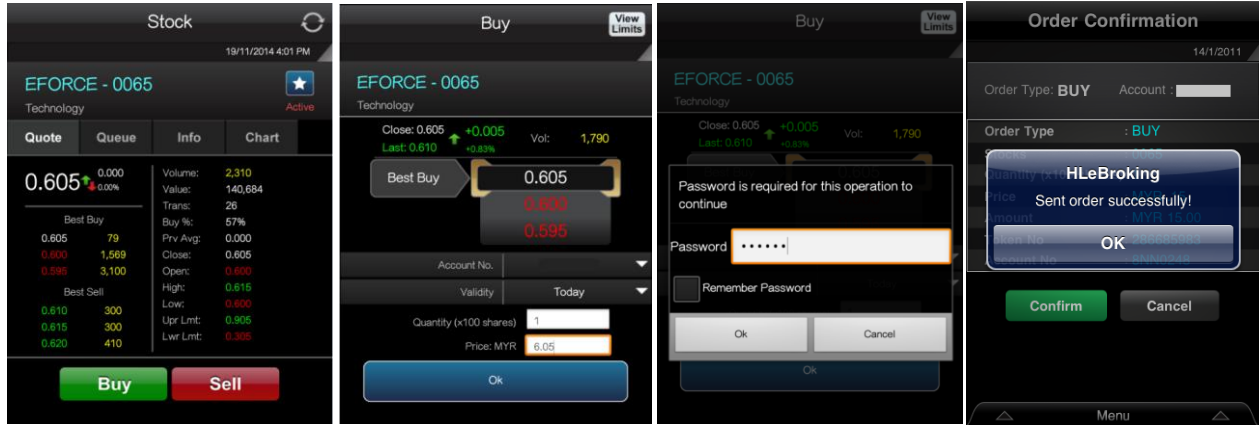


Start Trading

To Place Order

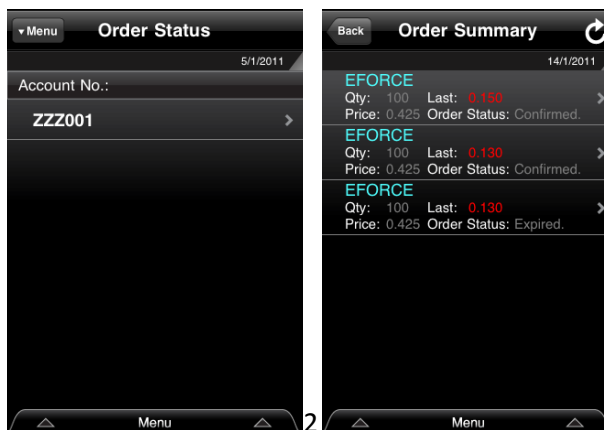
Tap Buy/Sell to place order >> Enter / Select Price >> Quantity >> OK >> Enter trading password >> Tap 'Confirm' on confirmation screen or 'Cancel' to cancel order.

*You are required to select Account No. should you have more than one account.



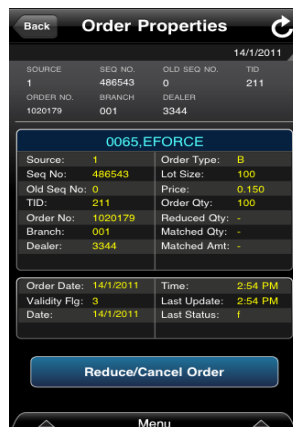
Order Status

Go to Order Status >> Select Account No.















To Cancel Order

Go to Order Status >> Select Account No. >> Select order in order summary >> scroll down >> cancel or reduce order.



Appendix I

Icon	Description
 Market	Tap to view each Market for Whole Market, Main Market, ACE Market.
 Indices	Indices consist of Indices Listing, Information & Intraday Chart. Tap to view the index listing for different sectors.
 Top 10	Tap  button to view more information in next column.
 Portfolio	Displays Portfolio Summary for each different account. (Not available at the moment).
 Stocks	Stock search - Key in the stock name or stock code. Tap the Search Results to view single stock details.
 Favorites	<p>To add favorite folder. Key in favorite folder's name. Favorite folder – Tap on Search result to add stock to the favorite list. Tap “Yes”.</p> <p>To refresh, tap  Button. To delete, tap  Button. To remove a stock from the favorite list, tap Delete button.</p>
 Order Status	To view order summary
 Settings	To change Auto Refresh setting by 1s, 5s, 10s, 15s, 30s or Off. Auto Refresh default setting is 5s. Profile setting option. Tap “Logout”.
 About Us	Introduction of Excel Force MSC Berhad.